

OKLAHOMA CITY, OKLAHOMA

AL-739 (FAA)

VOR/DME PWA 113.4 Chan 81	APP CRS 176°	Rwy Idg TDZE Apt Elev	6844 1290 1299
---	------------------------	-----------------------------	---

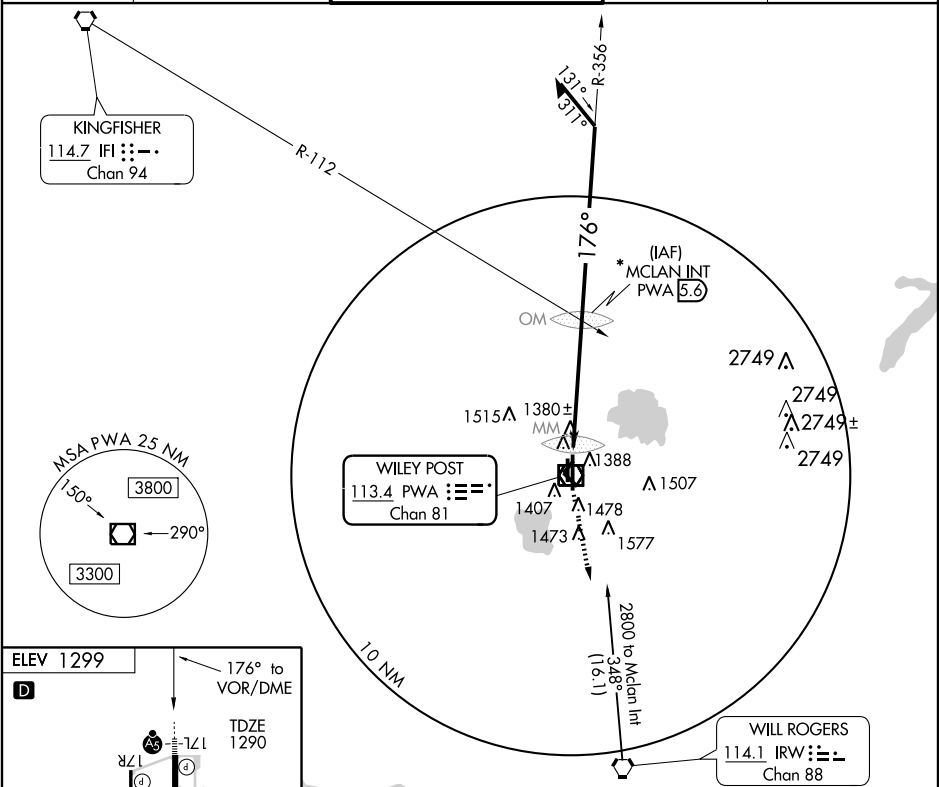
VOR RWY 17L
OKLAHOMA CITY/ WILEY POST (PWA)

▼ *Radar fix in lieu of MCLAN INT will be provided on pilot request. Cat D S-17L visibility increased ¼ mile for inoperative MALS.R.
ASR



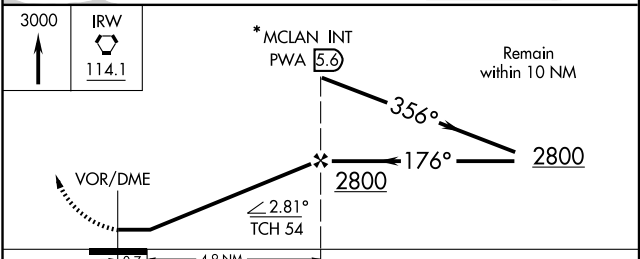
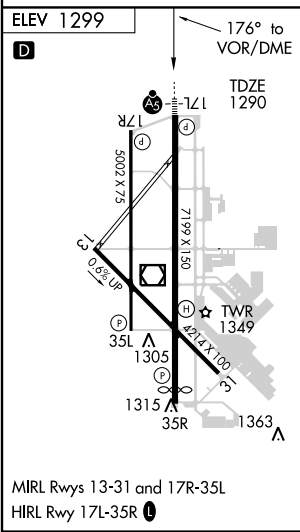
MISSED APPROACH: Climb to 3000 direct IRW VORTAC.

ATIS 128.725	OKE CITY APP CON 124.6 266.8	WILEY POST TOWER * 126.9 (CTAF) 0 306.9	GND CON 121.7	UNICOM 122.95
------------------------	--	---	-------------------------	-------------------------



SC-1, 06 MAY 2010 to 03 JUN 2010

SC-1, 06 MAY 2010 to 03 JUN 2010



CATEGORY	A	B	C	D
S17L	1640-½	350 (400-½)		1640-1 350 (400-1)
CIRCLING	1780-1	481 (500-1)	1780-1½ 481 (500-1½)	1880-2 581 (600-2)

OKLAHOMA CITY, OKLAHOMA
Amdt 11A 09015

35° 32' N-97° 39' W

OKLAHOMA CITY/ WILEY POST (PWA)
VOR RWY 17L