


# RNAV (GPS) RWY 17L

OKLAHOMA CITY/WILEY POST (PWA)

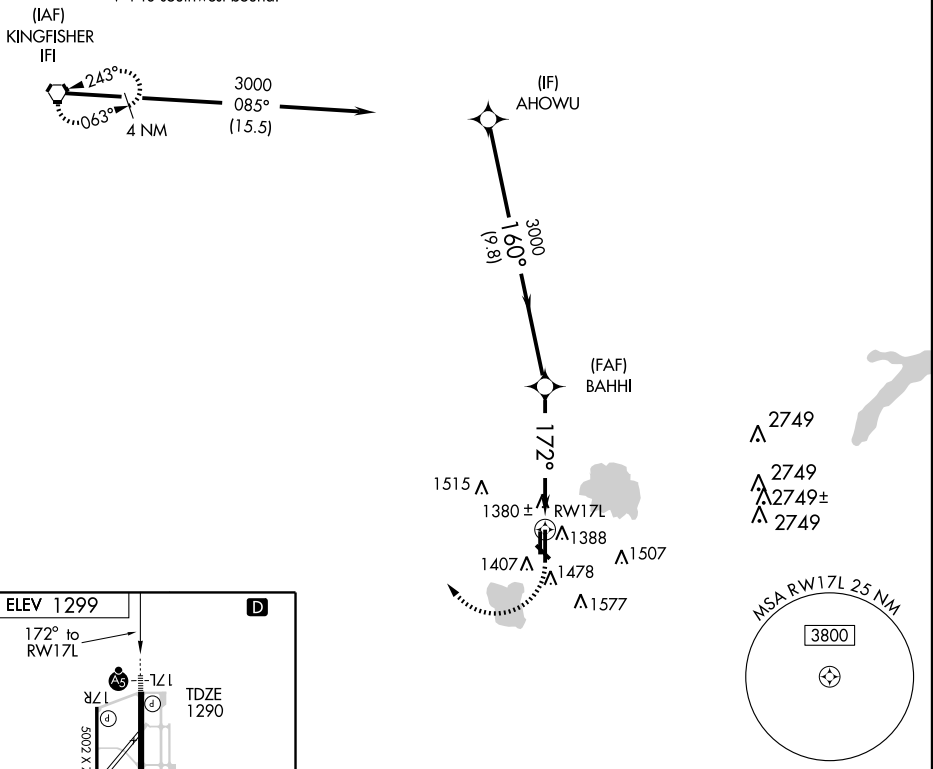
APP CRS <b>172°</b>	Rwy Idg <b>6844</b>
	TDZE <b>1290</b>
	Apt Elev <b>1299</b>

**⚠** DME/DME RNP -0.3 NA. If local altimeter setting not received, use Will Rogers World altimeter setting and increase all MDAs 40 feet.

**MALSR**  MISSED APPROACH: Climbing right turn to 3400 direct IFI VORTAC and hold.

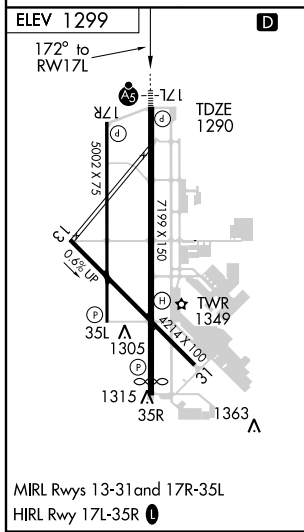
ATIS <b>128.725</b>	OKE CITY APP CON <b>124.6 266.8</b>	WILEY POST TOWER ★ <b>126.9 (CTAF) 0 306.9</b>	GND CON <b>121.7</b>	UNICOM <b>122.95</b>
------------------------	--	---	-------------------------	-------------------------

Procedure NA for arrivals of IFI VORTAC via V-140 southwest bound.





SC-1, 06 MAY 2010 to 03 JUN 2010

SC-1, 06 MAY 2010 to 03 JUN 2010



MIRL Rwy 13-31 and 17R-35L  
HIRL Rwy 17L-35R

VGSI and descent angles not coincident.

	3400	IFI		
				
AHOWU	3000	BAHHI		
3000	160°	3000		
Procedure Turn NA		172°		
		3.05° TCH 54		
	9.8 NM	5.1 NM		
CATEGORY	A	B	C	D
LNAV MDA	1700-1	410 (500-1)	1700-1¼	410 (500-1¼)
CIRCLING	1780-1	481 (500-1)	1780-1½	481 (500-1½)
			1880-2	581 (600-2)