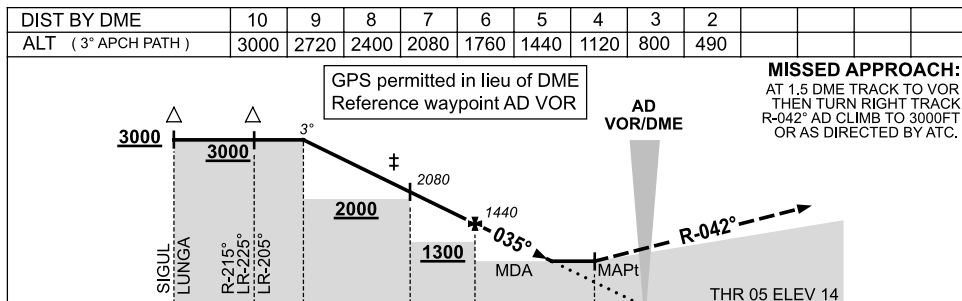
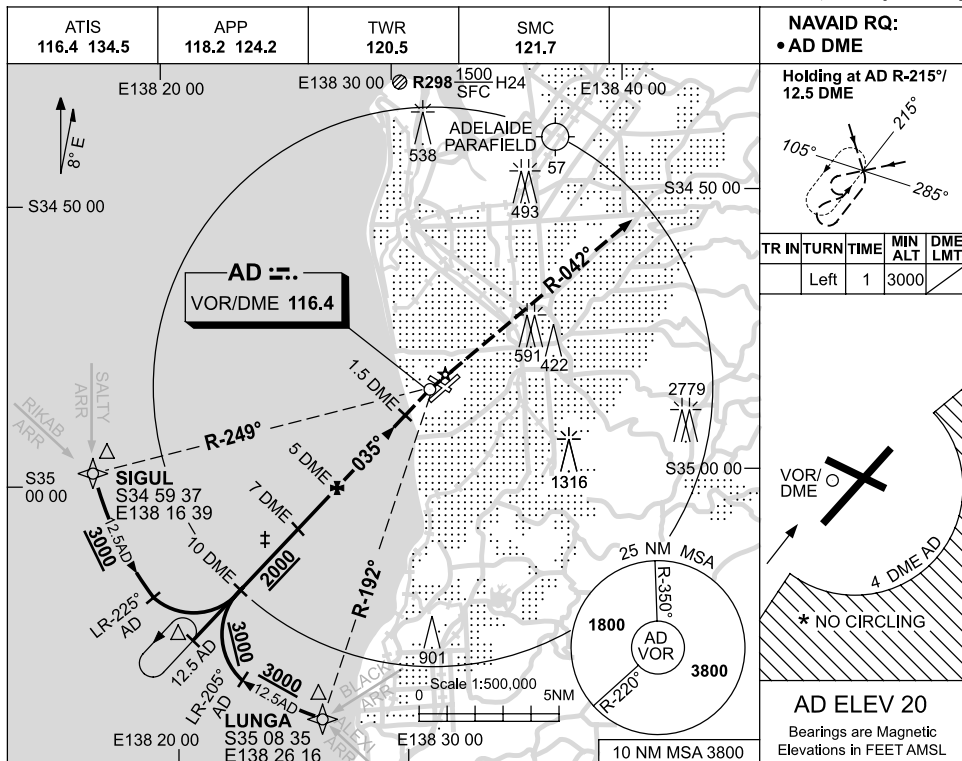


USE QNH

VOR RWY 05
ADELAIDE, SA (YPAD)

11 MAR 2010



| CATEGORY | A | B | C | D |
|-------------|----------------------|---|-----------------------|-----------------------|
| S-I VOR/DME | 490 (470-2.6) | | | |
| CIRCLING * | 900 (880-2.4) | | 1000 (980-4.0) | 1000 (980-5.0) |
| ALTERNATE * | (1380-4.4) | | (1480-6.0) | (1480-7.0) |

NOTES

- * 1. NO CIRCLING BEYOND 4 DME AD SOUTH OF RWY 05 /23.
- * 2. SPECIAL ALTN MNM 850/4.0 KM.
- * 3. ACFT MAY BE RADAR VECTORED TO FNA.

Changes: DIAG MDA, SALTY ARR, CO-ORD FORMAT, Editorial.

PADVO01-122