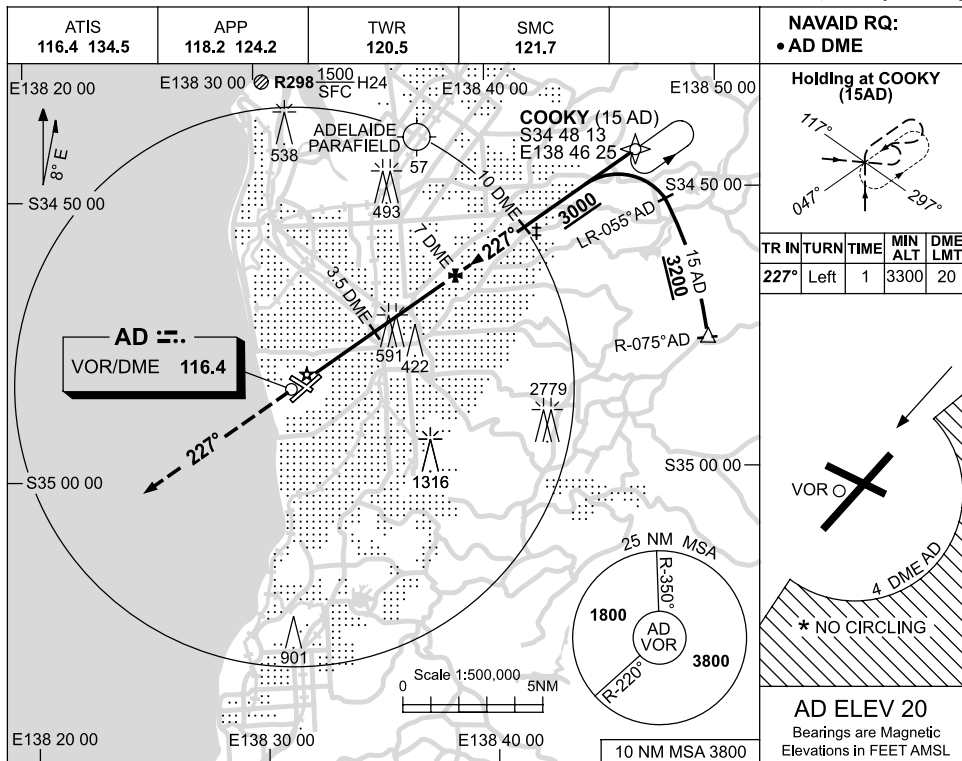


USE QNH

VOR RWY 23
ADELAIDE, SA (YPAD)

11 MAR 2010

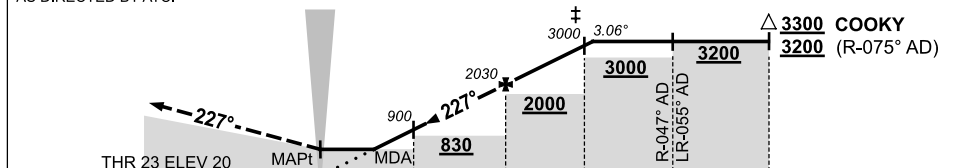


DIST BY DME	3.1	3.5	4	5	6	7	8	9	10	10.6			
ALT (3.06° APCH PATH)	770	900	1040	1380	1700	2030	2350	2680	3000	3200			

MISSED APPROACH:

AT AD VOR TRACK 227°. CLIMB TO 3000FT OR AS DIRECTED BY ATC.

GPS permitted in lieu of DME
Reference waypoint AD VOR



NM BY DME

NOTES

- * 1. NO CIRCLING S OF RWY 05/23 BEYOND 4 DME AD.
- * 2. SPECIAL ALTN MNM NOT APPLICABLE.
- * 3. ACFT MAY BE RADAR VECTORED TO 10 DME FINAL.
- * 4. APCH PATH ANGLE DOES NOT COINCIDE WITH PAPI ON GLIDE SLOPE INDICATION.

CATEGORY	A	B	C	D
S-I VOR/DME	770 (750-4.2)			
CIRCLING *	900 (880-2.4)		1000 (980-4.0)	1000 (980-5.0)
ALTERNATE *	(1380-4.4)		(1480-6.0)	(1480-7.0)

Changes: CO-ORD FORMAT, Editorial.

PADVO04-122