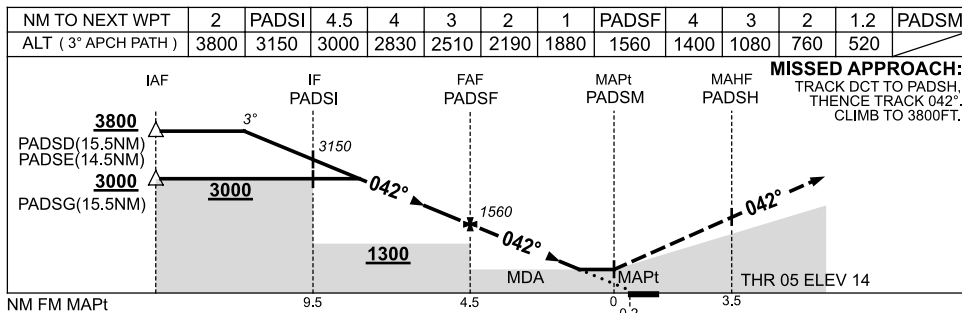
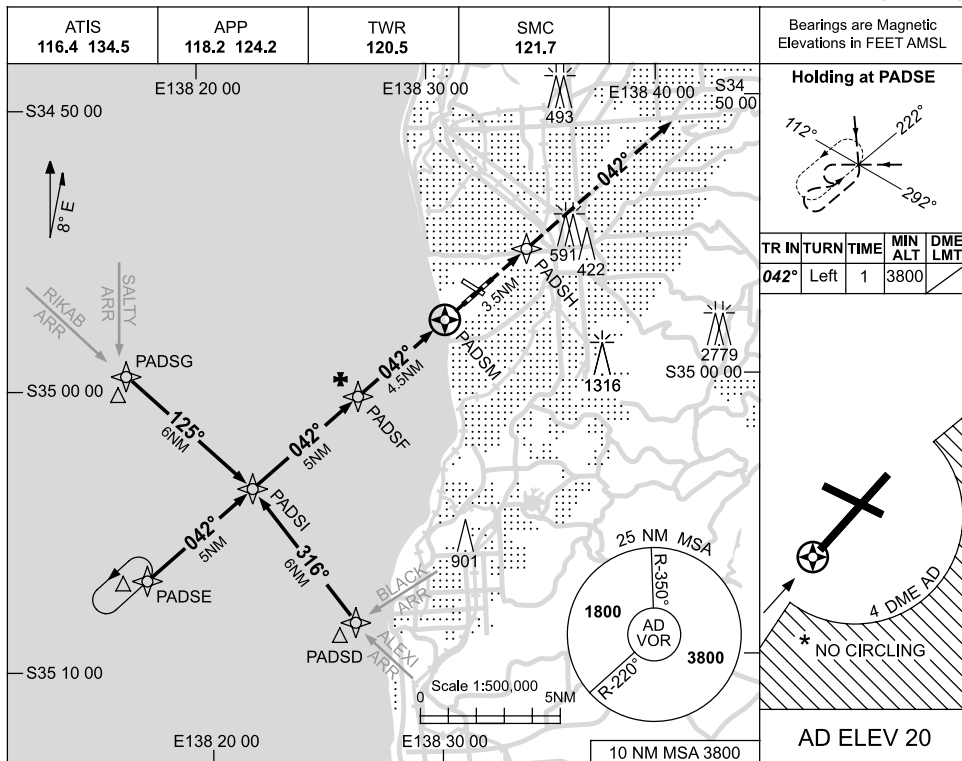


USE QNH

RNAV-Z (GNSS) RWY 05  
ADELAIDE, SA (YPAD)

11 MAR 2010



NOTES

CATEGORY	A	B	C	D
S-I GNSS		520 (500-2.8)		
CIRCLING *	900 (880-2.4)		1000 (980-4.0)	1000 (980-5.0)
ALTERNATE	(1380-4.4)		(1480-6.0)	(1480-7.0)

1. MAX IAS:  
INITIAL : 230KT.
- \* 2. NO CIRCLING SOUTH OF RWY 05/23 BEYOND 4 DME AD.

Changes: SALTY ARR, CO-ORD FORMAT.

PADGN01-122