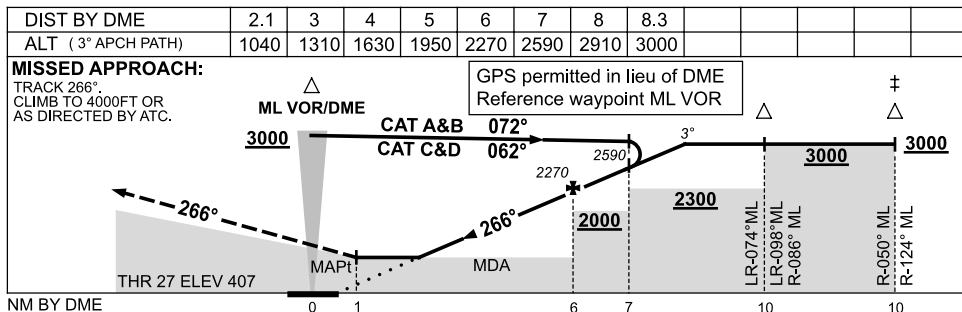
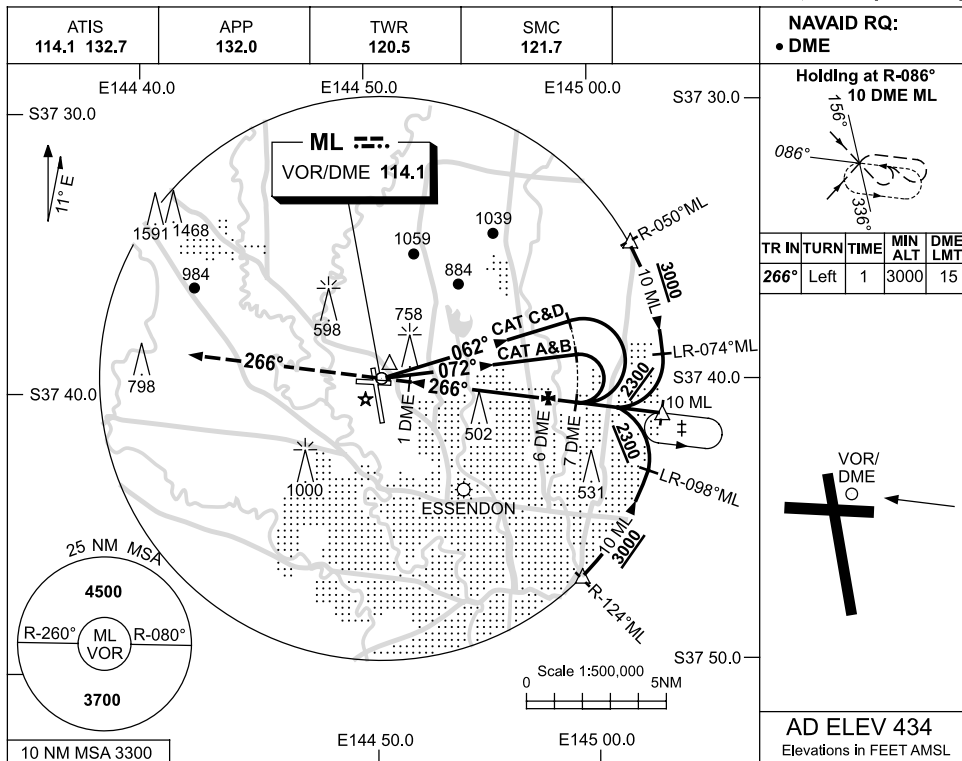


USE QNH

VOR RWY 27  
MELBOURNE, VIC (YMML)

4 JUN 2009



**NOTES**

CATEGORY	A	B	C	D
S-I VOR/DME	<b>1040 (633-3.6)</b>			
CIRCLING	<b>1140 (706-2.4)</b>	<b>1450 (1016-4.0)</b>	<b>1600 (1166-5.0)</b>	
ALTERNATE ‡	(1206-4.4)	(1516-6.0)	(1666-7.0)	

\* 1. SPECIAL ALT MNM NOT APPLICABLE.  
‡ 2. ACFT MAY BE RADAR VECTORED TO IAF.

Changes: NOTE 1.

MMLVO02-119