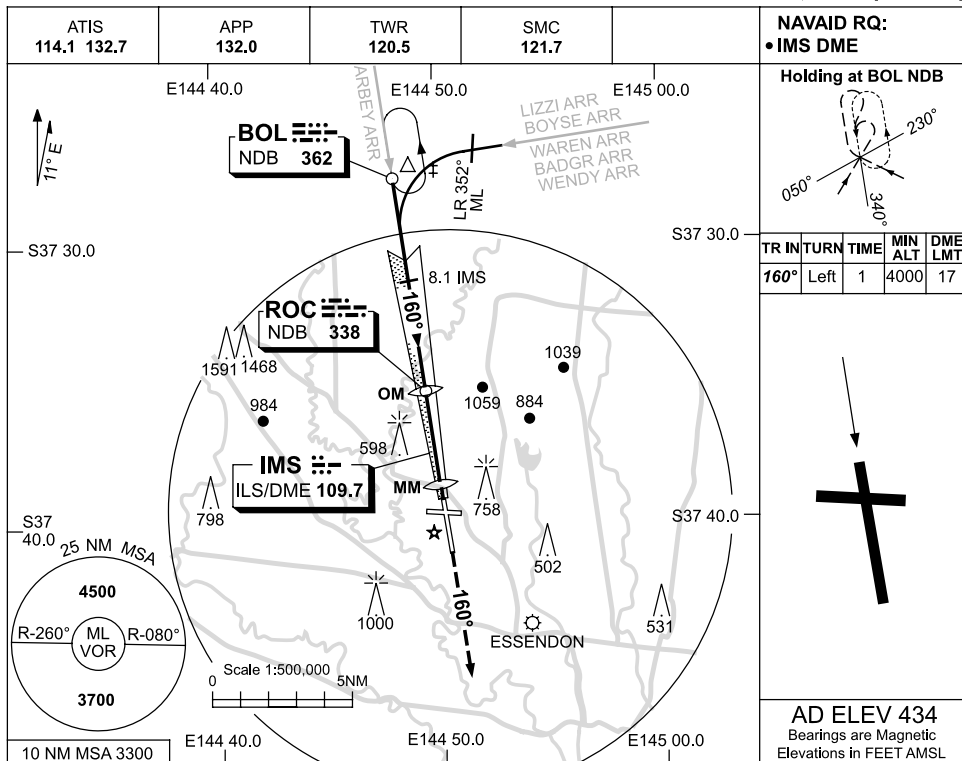


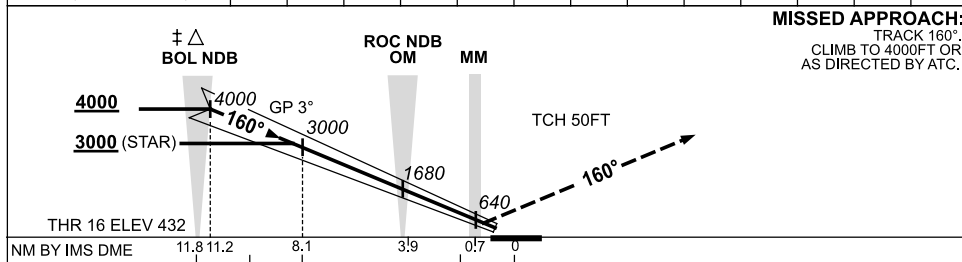
USE QNH

ILS-X (CAT II & III) RWY 16  
MELBOURNE, VIC (YMML)

19 NOV 2009



DME DIST	11.2	10	9	8.1	7	5	3.9	3	2.3	2	1.0	0.7	
ALT (3° APCH PATH)	4000	3600	3280	3000	2650	2010	1680	1370	1140	1050	740	640	



**NOTES**

1. SPECIAL AIRCREW & ACFT CERTIFICATION REQD.
- \* 2. SPECIAL ALT MNM 700/2.5KM.
- ‡ 3. ACFT MAY BE RADAR VECTORED TO JOIN PROCEDURE FM STAR PRIOR TO FAP.

CATEGORY	A	B	C	D
S-I ILS CAT II		532 (100)	350 RVR	
S-I ILS CAT IIIa		482 (50)	200 RVR	
S-I ILS CAT IIIb			75 RVR	
ALTERNATE ‡	(1206-4.4)		(1516-6.0)	(1666-7.0)

Changes: NEW PROC, Editorial.

MMLII04-121