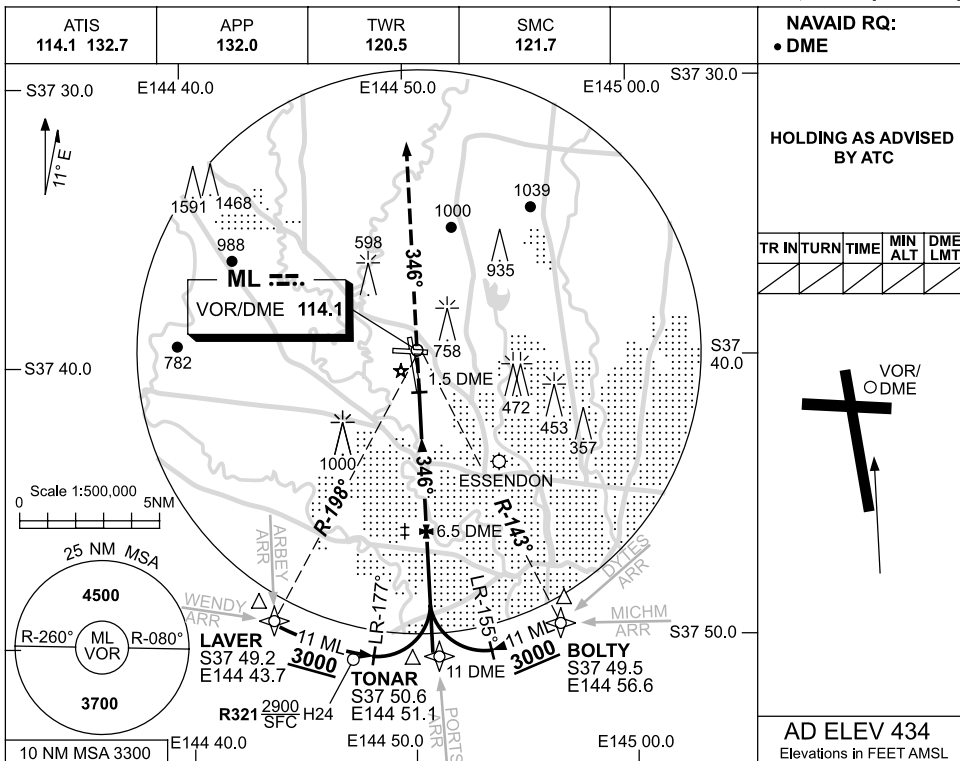


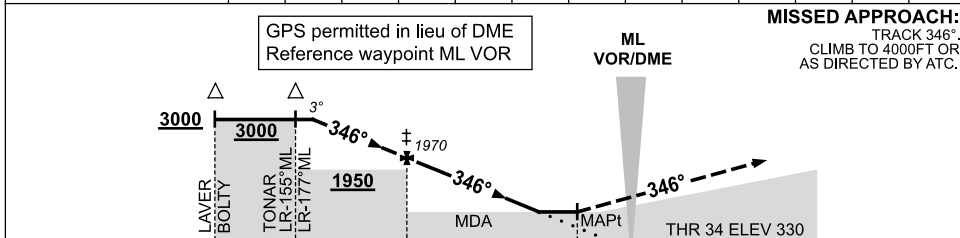
USE QNH

VOR RWY 34
MELBOURNE, VIC (YMML)

27 AUG 2009



DIST BY DME	9.7	9	8	7	6.5	6	5	4	3	2.7			
ALT (3° APCH PATH)	2990	2770	2450	2130	1970	1810	1490	1180	860	760			



NM BY DME 11 11 6.5 1.5 0

NOTES

CATEGORY	A	B	C	D
S-I VOR/DME	760 (430-2.4)			
CIRCLING	1140 (706-2.4)		1450 (1016-4.0) 1600 (1166-5.0)	
ALTERNATE *	(1206-4.4)		(1516-6.0) (1666-7.0)	

- * 1. SPECIAL ALT MNM 700/2.5KM.
- ‡ 2. ACFT MAY BE RADAR VECTORED TO IAF.

Changes: DIST ALT TABLE, CROSSING HT.

MMLVO03-120