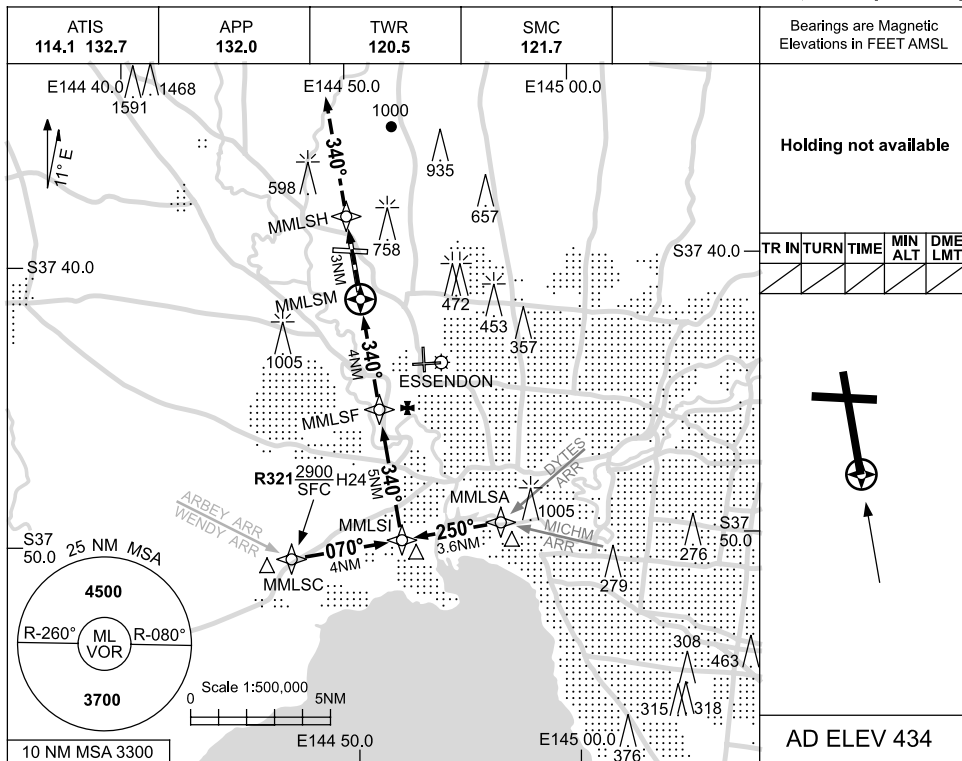


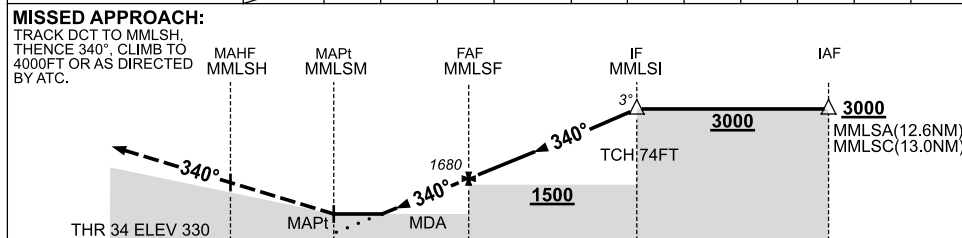
USE QNH

RNAV-Z (GNSS) RWY 34
MELBOURNE, VIC (YMML)

19 NOV 2009



NM TO NEXT WPT	MMLSM	1.2	2	3	MMLSF	1	2	3	4	4.2	
ALT (3° APCH PATH)		780	1040	1360	1680	2000	2310	2630	2950	3000	



NOTES

CATEGORY	A	B	C	D
S-I GNSS	780 (450-2.5)			
CIRCLING	1140 (706-2.4)	1450 (1016-4.0)	1600 (1166-5.0)	
ALTERNATE	(1206-4.4)	(1516-6.0)	(1666-7.0)	

1. MAX IAS:
INITIAL : 200KT.

Changes: MMLSB DELETED.

MMLGN01-121