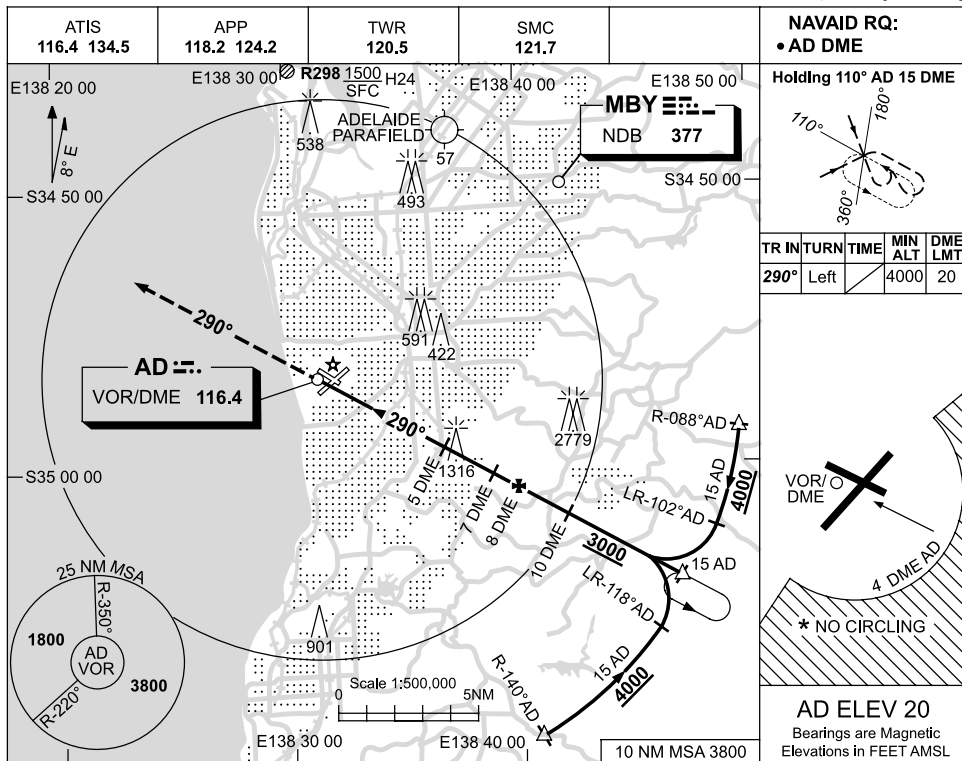


USE QNH

VOR RWY 30
ADELAIDE, SA (YPAD)

11 MAR 2010

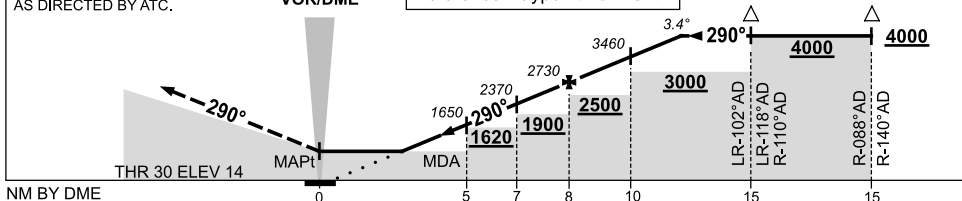


DIST BY DME	2.1	3	4	5	6	7	8	9	10	11	11.6		
ALT (3.4° APCH PATH)	600	930	1290	1650	2010	2370	2730	3090	3460	3820	4000		

MISSED APPROACH:

AT AD VOR TRACK 290°. CLIMB TO 3000FT OR AS DIRECTED BY ATC.

GPS permitted in lieu of DME
Reference waypoint AD VOR



NOTES

- * 1. NO CIRCLING S OF RWY 05/23 BEYOND 4 DME AD.
- * 2. SPECIAL ALTN MNM 850/4.0 KM.
- 3. APCH PATH ANGLE DOES NOT COINCIDE WITH PAPl ON GLIDE SLOPE INDICATION.

CATEGORY	A	B	C	D
S-I VOR/DME	600 (580-3.2)			
CIRCLING *	900 (880-2.4)		1000 (980-4.0)	1000 (980-5.0)
ALTERNATE *	(1380-4.4)		(1480-6.0)	(1480-7.0)

Changes: CO-ORD FORMAT, Editorial.

PADVO05-122