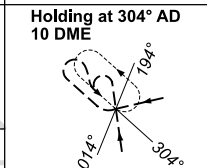
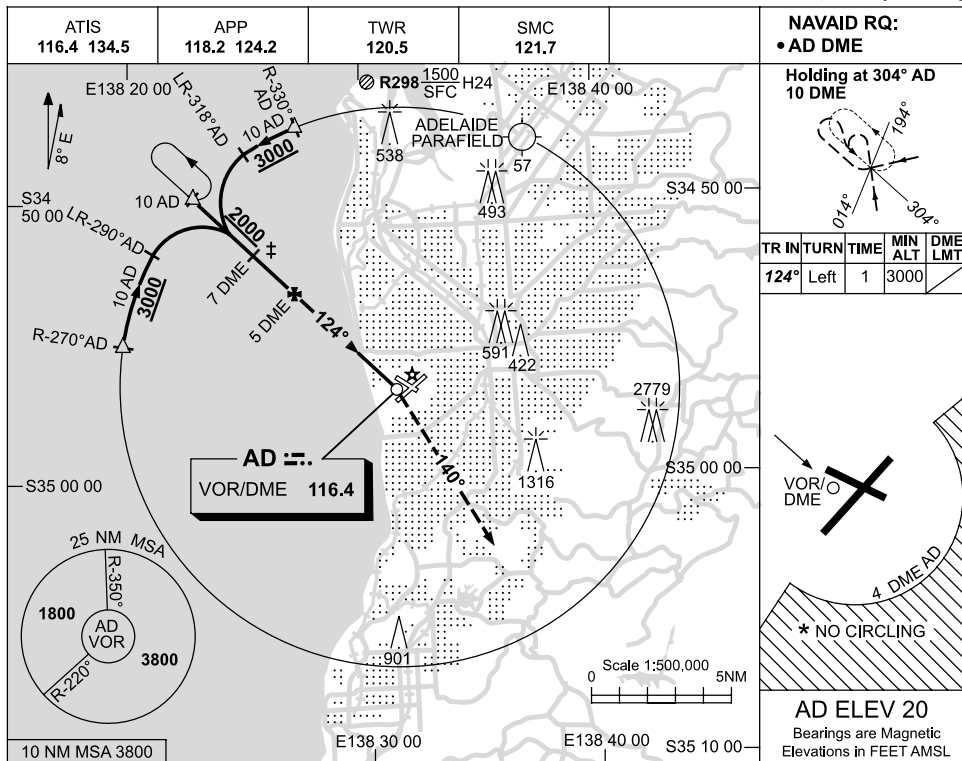


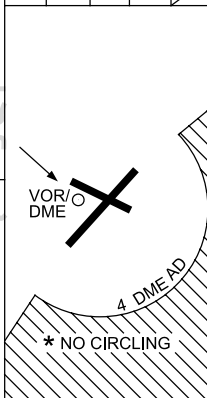
USE QNH

VOR RWY 12
ADELAIDE, SA (YPAD)

11 MAR 2010

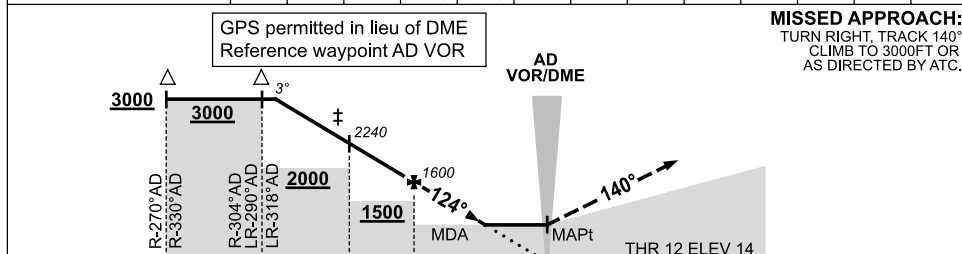


TR IN	TURN	TIME	MIN ALT	DME LMT
124°	Left	1	3000	



AD ELEV 20
Bearings are Magnetic
Elevations in FEET AMSL

DIST BY DME	9.4	9	8	7	6	5	4	3	2	1.4			
ALT (3° APCH PATH)	3000	2880	2560	2240	1920	1600	1290	970	660	470			



MISSED APPROACH:
TURN RIGHT, TRACK 140°
CLIMB TO 3000FT OR
AS DIRECTED BY ATC.

NM BY DME	10	10	7	5	0
-----------	----	----	---	---	---

NOTES

CATEGORY	A	B	C	D
S-I VOR/DME (2.5% MAP)			780 (760-4.4)	
S-I VOR/DME#(3.6% MAP)			470 (450-2.4)	
CIRCLING *	900 (880-2.4)		1000 (980-4.0)	1000 (980-5.0)
ALTERNATE ‡	(1380-4.4)		(1480-6.0)	(1480-7.0)

- * 1. NO CIRCLING S OF RWY 05/23 BEYOND 4 DME AD.
- ‡ 2. SPECIAL ALTN MNM 850/4.0 KM.
- ‡ 3. ACFT MAY BE RADAR VECTORED TO FNA.
- # 4. MIN MAP GRAD 3.6%.

Changes: CO-ORD FORMAT, Editorial.

PADVO03-122