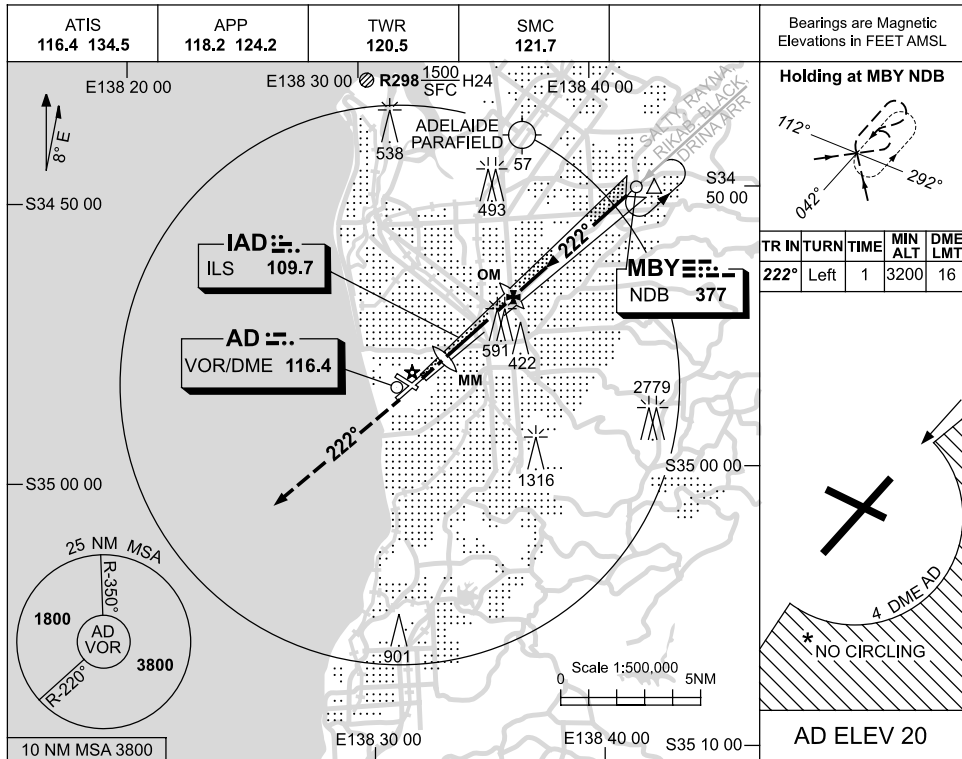


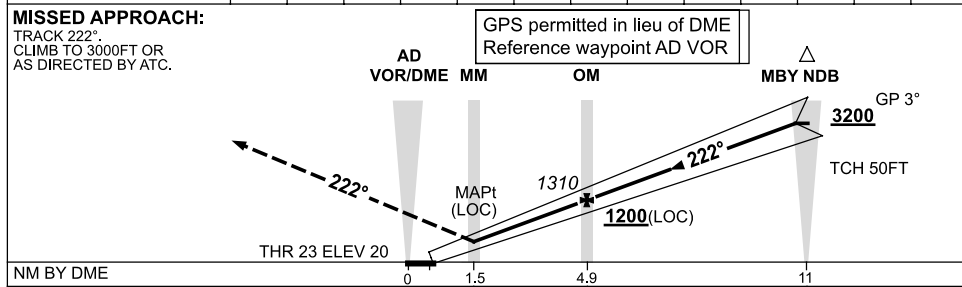
USE QNH

ILS or LOC RWY 23
ADELAIDE, SA (YPAD)

11 MAR 2010



DIST BY DME	3.2	4	5	6	7	8	9	10	10.8		
ALT (3° APCH PATH)	770	1030	1350	1670	1990	2310	2630	2950	3200		



NOTES

CATEGORY	A	B	C	D
S-I ILS		270 (250)	1.2	
S-I LOC		770 (750-2.4)		
CIRCLING*	900 (880-2.4)		1000 (980-4.0)	1000 (980-5.0)
ALTERNATE*	(1380-4.4)		(1480-6.0)	(1480-7.0)

*1. NO CIRCLING S OF RWY 05/23 BEYOND 4 DME AD.
*2. SPECIAL ALTN MNM 850/4.0KM.

Changes: STARS, CO-ORD FORMAT, Editorial.

PADI01-122